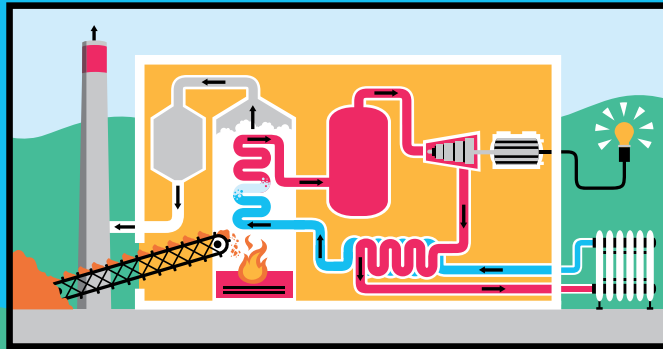
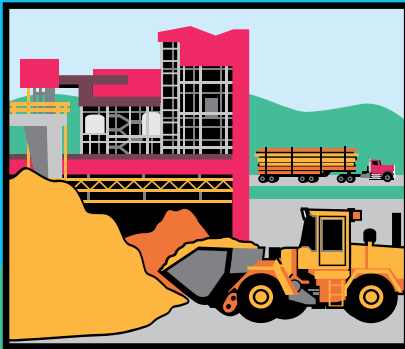


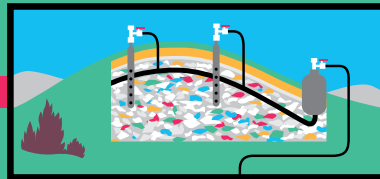
BIOMASS



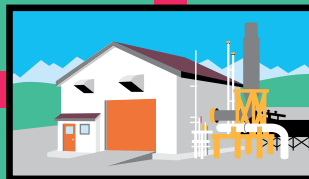
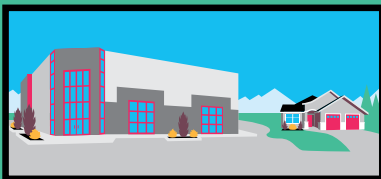
BIOENERGY BEGINS WITH BIOMASS, WHICH IS ANY ORGANIC MATERIAL THAT HAS STORED ENERGY FROM THE SUN IN A CHEMICAL FORM, SUCH AS TREES, HAY, AND EVEN HOUSEHOLD GARBAGE.



ELECTRICITY: WOODCHIPS, SAWDUST OR OTHER ORGANIC MATERIALS ARE COLLECTED AND COMPRESSED INTO PELLETS. THE PELLETS FUEL A BOILER USED TO PRODUCE STEAM. IT TURNS TURBINES, WHICH SPIN MAGNETS IN A GENERATOR, CONVERTING MECHANICAL ENERGY INTO ELECTRICITY.



LANDFILL GAS CAPTURE: METHANE FROM CAPPED LANDFILLS IS COLLECTED, PROCESSED AND UPGRADED, THEN TRANSMITTED BY PIPELINE TO HOMES AND BUSINESSES.



LIQUID BIOFUELS: BIOETHANOL IS CREATED BY FERMENTING AND DISTILLING BIOMASS SUCH AS STRAW, CORN OR GRAINS. BIODIESEL IS DERIVED FROM VEGETABLE AND ANIMAL FATS, INCLUDING USED OIL FROM RESTAURANTS.

